


## Portable Indoor Air Quality Monitor

Providing the latest in Monitoring & Data Logging for IAQ testing in Buildings, Hospitals, Universities, Labs, Clean Rooms, Airports & more

- Customize UP to 7 Gases  
(Multiple Parameters - Up to 12)
- REAL-TIME Continuous Data-Logging
- Long Lasting Rechargeable Battery
- Large Internal Memory (2000)
- PC Software & USB Included
- Easy to Use Menu System
- Optional Wireless Printer
- Portable w/ Swivel Handle
- Barometric Air Pressure
- Dual Temp TcK Inputs
- Optional Air Sampling Probe
- Active Internal Sampling Pump
- MADE IN USA 



% RH

Temp

Barometric  
Pressure

CO<sub>2</sub>

CO

VOC

Formaldehyde

NO<sub>2</sub>

NO

O<sub>3</sub>

O<sub>2</sub>

H<sub>2</sub>S

SO<sub>2</sub>

“Built with Quality in Mind”



Real-Time Data-Logging Software  
For Graphs, Data Review, IAQ Reports

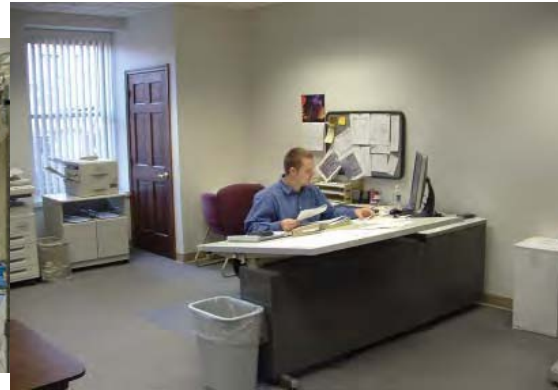
Wireless Communications with  
Computer & Remote Printer

Light Weight, Durable, and  
Easy to Transport Design

# AQ EXPERT



## Applications



CO<sub>2</sub>, CO, % RH, Temp, TVOC's, O<sub>2</sub>, NO, NO<sub>2</sub>, O<sub>3</sub>, CH<sub>2</sub>O, SO<sub>2</sub>, H<sub>2</sub>S, Barometric Pressure

## Features

### Custom to Your Application

Up to 7 different toxic gases to meet the needs of most air quality analyses

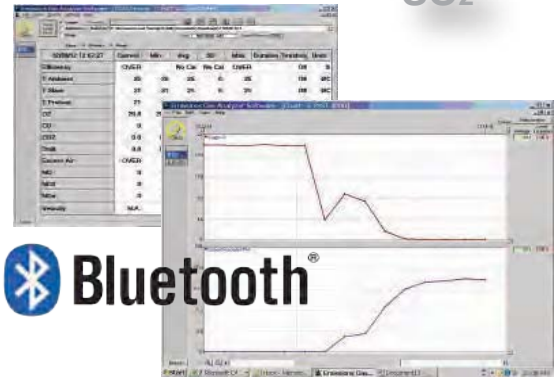
### REAL-TIME Data Logging

Save and graph using USB or wireless Bluetooth to a Computer or Tablet

NO<sub>2</sub> VOCs  
NO CH<sub>2</sub>O  
SO<sub>2</sub>

VOCs

CO<sub>2</sub>



AQ Gas<sup>®</sup> Real-Time Datalogging Software

### Easy Calibration

Built-in menu driven calibration procedure

### Made in USA

Designed and manufactured in the USA



O<sub>2</sub> % RH  
H<sub>2</sub>S  
CO

**E Instruments International**

**www.E-Inst.com**

P: 215-750-1212 F: 215-750-1399 A: 402 Middletown Blvd, Ste 216 Langhorne, PA 19047

## Specifications

Parameter	Sensor	Range	Res.	Accuracy
CO <sub>2</sub>	NDIR	0 - 5,000 ppm	1 ppm	±2% of rdg. ±10 ppm
CO <sub>2</sub>	NDIR	0 - 20%	0.1%	±3% of rdg.
CO <sup>1</sup>	Electrochemical	0 - 200 ppm	0.1 ppm	±4% of rdg. ±0.5 ppm
% RH	Thin Film Capacitive	5 - 95% RH	0.1% RH	±2% RH
Ambient Temperature	Pt100	-40 - 257°F (-40 - 125°C)	0.1°C/F	±2°F (32-140°F) (±0.4°C [0-60°C])
VOCs	PID	0 - 20,000 ppb (0 - 46,000 µg/m <sup>3</sup> )	1 ppb (1 µg/m <sup>3</sup> )	±10 % of rdg. ±20 ppb
VOCs	PID	0 - 200 ppm (0 - 460 mg/m <sup>3</sup> )	1 ppm (1 mg/m <sup>3</sup> )	±10 % of rdg. ±2 ppm
O <sub>2</sub>	Electrochemical	0 - 25%	0.1%	±0.1% vol rdg.
Ozone (O <sub>3</sub> )	Electrochemical	0 - 5 ppm	1 ppb	
H <sub>2</sub> S <sup>1</sup>	Electrochemical	0 - 100 ppm	1 ppm	±4% of rdg. ± 0.5 ppm
CH <sub>2</sub> O <sup>2,3</sup>	Electrochemical	0 - 10,000 ppb	1 ppb	±5% of rdg. ± 50 ppb
NO <sup>1</sup>	Electrochemical	0 - 250 ppm	0.1 ppm	±4% of rdg. ±0.5 ppm
NO <sub>2</sub> <sup>1</sup>	Electrochemical	0 - 20 ppm	0.1 ppm	±4% of rdg. ±0.5 ppm
SO <sub>2</sub> <sup>1</sup>	Electrochemical	0 - 20 ppm	0.1 ppm	±4% of rdg. ±0.5 ppm
Barometric Pressure	Solid State	260 - 1260 mbar	1 mbar	±2 mbar
Differential Pressure	Bridge	±40.0 inH <sub>2</sub> O (±100 mbar)	0.1 inH <sub>2</sub> O (0.25 mbar)	±1% of rdg.
Temperature Type K T1 & T2	Tc K	0 - 2000°F (0 - 1100°C)	1°C/F	±2% of rdg.
Air Velocity	Calculated	0 - 300 ft/sec	1 ft/sec	
<b>Electromagnetic compatibility</b>		EN 61326-1, Portable Equipment		

1. Other Ranges are Available Upon Request 2. Accuracy Based on Laboratory Conditions 3. This sensor may have interference from H<sub>2</sub>, CO, H<sub>2</sub>S and other reducing gases such as alcohols

## Accessories



Wireless Bluetooth Printer



Sampling Probe



Air Velocity w/ Pitot Tube



Carrying Case



Moisture Exchange Tube for Calibration



Ambient Air Zero Filter

## AQ EXPERT ORDERING CODE

Part Number: **EXPERT-** \_\_\_ - \_\_\_ - \_\_\_ - \_\_\_ - \_\_\_  
 (Example: **EXPERT-C2-C-V1** = Ambient Temp, % RH, Barometric Pressure, CO<sub>2</sub> (0-5000 ppm), CO (0-200 ppm), VOC (0-20,000 ppb))

### AQ EXPERT Base Unit Including:

- Ambient Temperature, % Relative Humidity
- Barometric Pressure, Wet Bulb & Dew Point
- Continuous Internal Sampling Pump
- REAL-TIME data logging
- PC Software (with USB Cable)
- Wireless Bluetooth & External Dongle
- Dual-channel TcK (Diff. Temp)
- Differential Pressure
- Differential Temperature
- Operating Manual
- Swivel Handle for Easy Transport
- Rechargeable Battery & AC Charger
- Factory Calibration Certificate



## ADD UP TO 7 (SEVEN) ADDITIONAL SENSORS FROM THE LIST BELOW:

PART NUMBER	DESCRIPTION
Expert-	AQ Expert Base Unit w/ Ambient Temp, %RH, Barometric Pressure
*-C2	CO <sub>2</sub> Sensor (0-5,000 ppm)
*-C	CO Sensor (0-200 ppm)
-V1	VOC Sensor (0-20,000 ppb)
-V2	VOC Sensor (0-200 ppm)
*-N	NO <sub>2</sub> Sensor (0-20 ppm)**
-Z	O <sub>3</sub> Sensor (0-5 ppm)**
*-H	H <sub>2</sub> S Sensor (0-100 ppm)
-O	O <sub>2</sub> Sensor (0-25%)
*-S	SO <sub>2</sub> Sensor (0-20 ppm)**
*-X	NO Sensor (0-250 ppm)
-F	CH <sub>2</sub> O Sensor (0-10,000 ppb)

\* Other Ranges are Available Upon Request

\*\* Note: All 3 O<sub>3</sub>, NO<sub>2</sub>, & SO<sub>2</sub> Sensors Cannot Concurrently be Installed on one Instrument

### OPTIONAL ACCESSORIES:

PART NUMBER	DESCRIPTION
E858140	Protective Carrying Case
AQ CAL-ZF	Ambient Air Zero Filter
AQ MET	Moisture Exchange Tube for Calibration
E85AACSF13	12" (300mm) Probe, 10' (3m) Dual Hose
EE900P	Bluetooth Wireless Printer
BB610032	12" (300mm) Pitot Tube (Air Velocity)
AACKP01	Differential Pressure Kit

